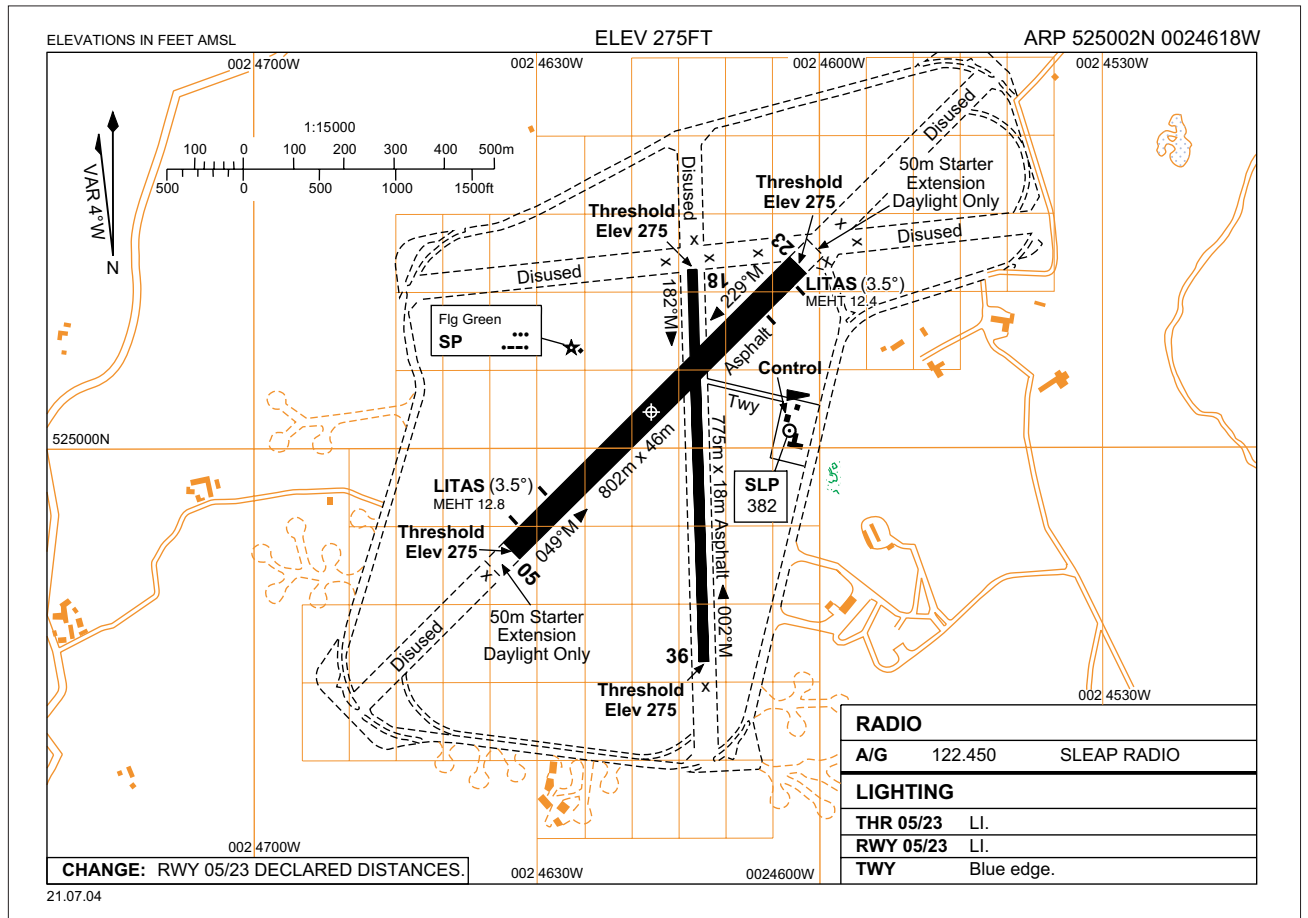


EGCV AD 2.1 **EGCV** **SLEAP**



EGCV AD 2.2 – AERODROME GEOGRAPHICAL AND ADMINISTRATIVE DATA

2	Direction and distance from city:	10 nm N of Shrewsbury.
4	Geoid undulation at AD ELEV PSN:	
5	Magnetic Variation/Annual Change:	W3.7° (2005) – 0.15° decreasing.
6	AD Administration: Address:	Shropshire Aero Club Ltd. Sleap Aerodrome, Harmer Hill, Shrewsbury, Shropshire, SY4 3HE.
	Telephone:	01939-232882.
	Fax:	01939-235058.
7	Type of Traffic Permitted (IFR/VFR):	

EGCV AD 2.3 – OPERATIONAL HOURS

1	AD:	Winter: Fri-Wed 0930-1700; Thu 0930-2115. Summer: Fri-Wed 0830-1600; Thu 0830-2015.
2	Customs and Immigration:	By arrangement.
7	ATS:	As AD hours. See also AD 2.18.
8	Fuelling:	As AD hours.
12	Remarks:	This aerodrome is strictly PPR by telephone (briefing must be obtained).

EGCV AD 2.4 – HANDLING SERVICES AND FACILITIES

2	Fuel/oil types:	Fuel: AVGAS 100LL, AVTUR JET A-1. Oil: Multigrade, AD100, AD80, S80.
3	Fuelling facilities/capacity:	

EGCV AD 2.6 – RESCUE AND FIRE FIGHTING SERVICES	
1 AD Category for fire fighting:	RFF Category Special.
3 Capability for removal of disabled aircraft:	

EGCV AD 2.10 – AERODROME OBSTACLES					
In Approach/Take-off areas			In circling area and at aerodrome		
1			2		
Runway/Area affected	Obstacle type Elevation Markings/lighting	Co-ordinates	Obstacle type Elevation Markings/lighting	Co-ordinates	
a	b	c	a	b	
		ft amsl		ft amsl	
36/Approach 18/Take-off	Trees	305 *524929.95N 0024616.39W	Hill	631 *524832.32N 0024252.42W	
3 Remarks:					

EGCV AD 2.12 – RUNWAY PHYSICAL CHARACTERISTICS					
Designations RWY Number	True bearing	Dimensions of RWY (m)	Strength (PCN) and surface of RWY and stopway	THR co-ordinates RWY end co-ordinates THR Geoid undulation	THR elevation Highest elevation of TDZ of precision APP RWY
1	2	3	4	5	6
05	045.60°	802 x 46	Asphalt	*524953.00N 0024633.00W - GUND	THR 275 ft
23	225.60°	802 x 46	Asphalt	*525012.00N 0024602.00W - GUND	THR 275 ft
18	178.60°	775 x 18	Asphalt	*525012.00N 0024613.00W - GUND	THR 275 ft
36	358.60°	775 x 18	Asphalt	*524946.00N 0024612.00W - GUND	THR 275 ft
Slope of RWY/SWY	Stopway Dimensions (m)	Clearway Dimensions (m)	Strip Dimensions (m)	OFZ	
7	8	9	10	11	
12 Remarks: Runway 05 - During daylight hours only, an additional 50 m starter extension is available. Runway 23 - During daylight hours only, an additional 50 m starter extension is available.					

EGCV AD 2.13 – DECLARED DISTANCES					
Runway Designator	TORA (m)	TODA (m)	ASDA (m)	LDA (m)	Remarks
1	2	3	4	5	6
05 23	802 802	802 802	802 802	802 802	
36 18	775 775	880 880	775 775	775 775	

EGCV AD 2.17 – ATS AIRSPACE			
Designation and lateral limits		Vertical limits	Airspace Classification
1		2	3
Sleap Aerodrome Traffic Zone (ATZ) Circle radius 2 nm centred on longest notified runway (05/23) 525002N 0024618W.		2000 ft aal SFC	G †
4	ATS unit callsign: Language:	Sleap Radio. English.	
5	Transition Altitude:		
6	Remarks:	ATZ Hours: See AD 2.18. † Refer to Section ENR 1.4 for Notifications.	

EGCV AD 2.18 – ATS COMMUNICATION FACILITIES					
Service Designation	Callsign	Frequency MHz	Hours of Operation		Remarks
1	2	3	Winter	Summer	5
A/G	Sleap Radio	122.450	Fri-Wed 0930-1700 Thu 0930-2115	Fri-Wed 0830-1600 Thu 0830-2015	ATZ hours co-incident with A/G hours.

EGCV AD 2.19 – RADIO NAVIGATION AND LANDING AIDS							
Type of Aid MAG VAR CAT of ILS/MLS	IDENT	Frequency	Hours of Operation		Position of transmitting antenna co-ordinates	Elevation of DME transmitting antenna	Remarks
1	2	3	Winter	Summer	5	6	7
NDB	SLP	382 kHz	Fri-Wed 0930-1700 Thu 0930-2115	Fri-Wed 0830-1600 Thu 0830-2015	*525001N 0024604W		On AD. Range 10 nm. Normally radiates H24

EGCV AD 2.20 – LOCAL TRAFFIC REGULATIONS	
1	Aerodrome Regulations a Aerodrome not available for public transport flights required to use a licensed aerodrome. b Aerodrome not available for helicopter flights requiring the use of a licensed aerodrome.
2	Ground Movement Aircraft are not to be parked on the grass strip parallel to the tarmac taxiway or opposite the fuel pump area. Pilots should use caution when taxiing on the grass and, if necessary, seek the assistance of a marshaller.
4	Warnings a Glider launching takes place on the aerodrome. b Aerodrome used by RAF Shawbury for helicopter training Mon-Fri. c The taxiway from the apron near ATC to the runway intersection is the only taxiway available for use. Pilots are warned that departure from the marked movement area can be hazardous. d Runway 18/36 has non-standard side markings.

EGCV AD 2.22 – FLIGHT PROCEDURES	
a	Circuits variable.
b	Pilots of inbound aircraft on weekdays are to contact Shawbury Approach on 120.775 MHz.
c	Arriving Procedures i When RAF helicopters are not operating, all arriving aircraft to carry out standard overhead join at 2000 ft QFE; ii When RAF Helicopters are operating, all arriving aircraft are to carry out a centre-line join at 2000 ft QFE.
Note: A full briefing must be obtained by telephone prior to departure.	

INTENTIONALLY BLANK